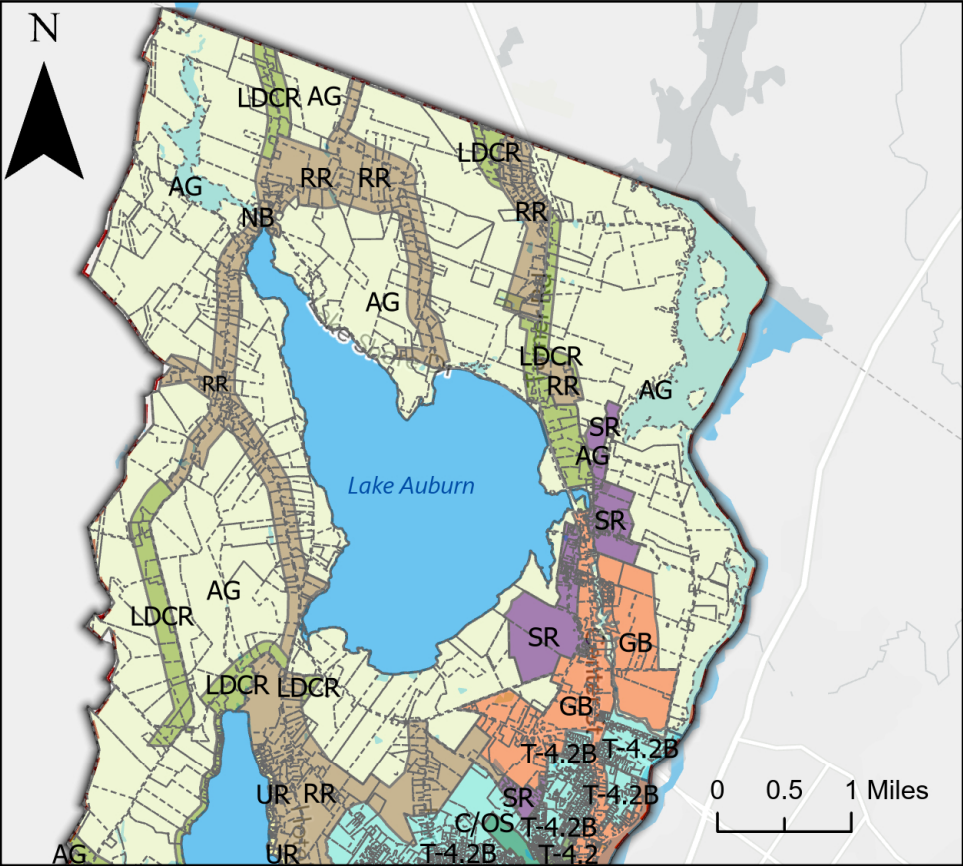
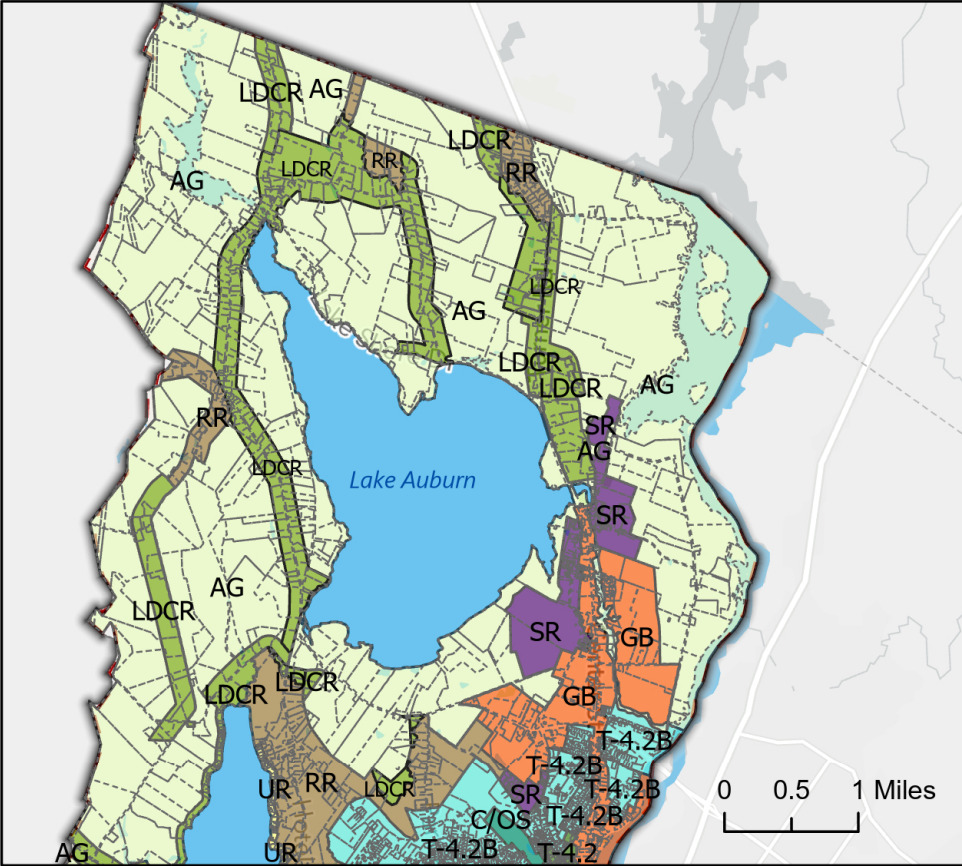


Zoning Map Amendment for Public Hearing November 14, 2023:
Rezoning Approximately 1,030 Acres of RR to LDCR



Existing Zoning



Proposed Zoning

- | | |
|--|---|
| AG - Agriculture and Resource Protection | MFS - Multi-Family Suburban |
| C/OS - Conservation / Open Space | NB - Neighborhood Business |
| GB - General Business | RR - Rural Residential |
| GB II - General Business II | SR - Suburban Residential |
| ID - Industrial | T-4.1 - Traditional Mainstreet Neighborhood |
| LDCR - Low Density Country Residential | T-4.2 - Traditional Downtown Neighborhood |

- | |
|--|
| T-4.2B - Traditional Neighborhood Development District |
| T-5.1 - Downtown Traditional Center |
| T-5.2 - Downtown City Center |
| T-6 - Great Falls Metropolitan |
| UR - Urban Residential |
| Parcels |

